

Pure Braking Power

Quality Brakes, Pads, Shoes or Drums for Every Land Rover Vehicle



Pure Braking Power

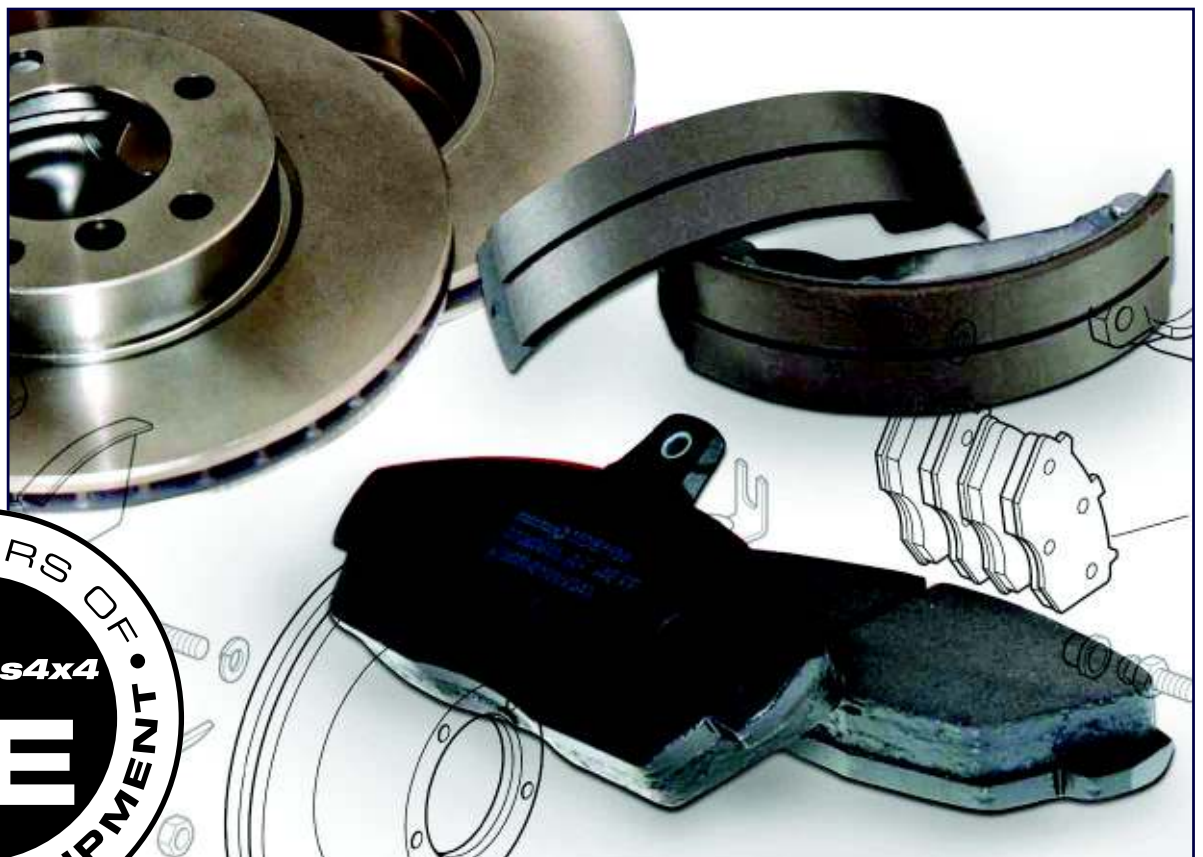
- Presented by Allmakes 4x4

Allmakes 4x4 is one of the world's leading and largest independent suppliers of genuine, OEM and replacement parts and accessories for Land Rover vehicles

We stock quality brake discs, drums, pads and shoes for every Land Rover vehicle from market leading brands such as Ferodo, Mintex, Lockheed, Delphi, TRW and our own acclaimed brand Allmakes 4x4 and Terrafirma, giving you dependable braking power whenever needed. And whether it is Original Equipment product or a quality replacement product, we offer you very competitive prices, ensuring that you get great value for quality products.



Whatever your Land Rover model is, find out it's application in the following chart. To order your preferred manufacturer's brake application, just quote the original part number when ordering. Visit www.allmakes4x4.com for more information.



Cross-drilled and Grooved Performance Brake Discs



We also supply Cross-drilled and Grooved discs to meet your exceptional demand for performance off road braking. They not only offer increased bite from cold and excellent fade resistance but also work perfectly with overweight 4WD vehicles with oversized tyres.

Angled grooves are machined into the brake disc to force away the dust and gasses that build up between the pad and disc with heavy use. The cross-drilling also aids heat dissipation.

Cross-drilled and grooved brake discs are available for most Land Rover vehicles and are identified by the suffix 'CDG' in the following application chart.





Series IIA - 1961 to 1983

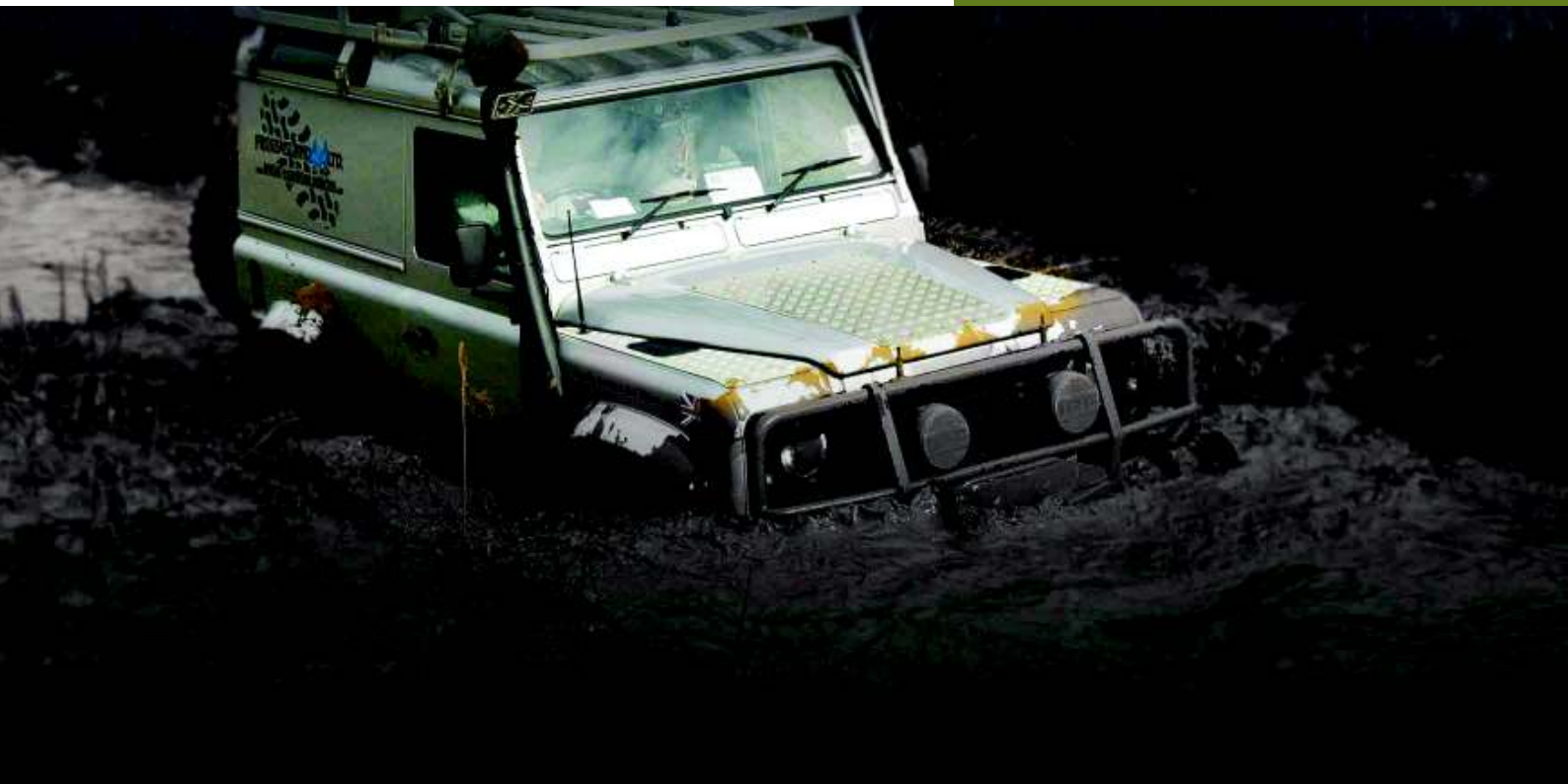
Vehicle Details	Front Drums	Front Shoes	Rear Drums	Rear Shoes	Parking Drum	Parking Shoes
SIIA 88" 1961-1971	591661	STC2796	591661	STC2796	274423	STC3821
SIIA 109" 4 CYL	516599	STC3944	576973	STC2797	274423	STC3821
SIIA 109" 6 CYL +V8	576974	STC3945	576973	STC2797	576624	STC2880

Series III - 1961 to 1983

Vehicle Details	Front Drums	Front Shoes	Rear Drums	Rear Shoes	Parking Drum	Parking Shoes
SIIIA 88" 1971- 06/1980	591039	STC2796	591039	STC2796	274423	STC3821
SIIIA 88" 06/1980-1983	516599	STC3944	591039	STC2796	274423	STC3821
SIIIA 109" 4 CYL	576973	STC3944	576973	STC359	274423	STC3821
SIIIA 109" 6 CYL +V8	576974	STC3945	576973	STC359	576624	STC2880

CDG = Cross Drilled and Grooved





Defender 90

Vehicle Details	Front Discs	Front Pads	Rear Drums	Rear Shoes	Parking Drum	Parking Shoes
Upto 1986	FRC7329 FRC7329CDG	STC9186	591039	STC2796	FRC3502	STC965
1987 to HA701009	FRC7329 FRC7329CDG	SFP500160	591039	STC2796	FRC3502	STC966
HA701010 to KA	FRC7329 FRC7329CDG	SFP000260	591039	STC2796	FRC3502	STC967

Vehicle Details	Front Discs	Front Pads	Rear Discs	Rear Pads	Parking Drum	Parking Shoes
LA930456 to 2006	FRC7329(Solid) FRC7329CDG FTC902(Vented) FTC902CDG	SFP000260	FTC1381 FTC1381CDG	SFP500190	FRC3502	ICW500010
2007 On	FRC7329(Solid) FRC7329CDG FTC902(Vented) FTC902CDG	SFP000260	FTC1381 FTC1381CDG	SFP500190	SDC100200	ICW500010

CDG = Cross Drilled and Grooved





Defender 110

Vehicle Details	Front Discs	Front Pads	Rear Drums	Rear Shoes	Parking Drum	Parking Shoes
Upto KA930455	FRC7329 FRC7329CDG	STC2950	576973	STC2797	FRC3502	STC965
Vehicle Details	Front Discs	Front Pads	Rear Discs	Rear Pads	Parking Drum	Parking Shoes
KA to XA159806	FRC7329(Solid) FRC7329CDG FTC902(Vented) FRC7329CDG	SFP000260	FTC3846	SFP000280	FRC3502	ICW500010
KA to XA159806 with ABS	FRC7329(Solid) FRC7329CDG FTC902(Vented) FRC902CDG	SFP000260	SDB000380	SFP500190	FRC3502	ICW500010
XA to 1A614448 All	FRC7329(Solid) FRC7329CDG FTC902(Vented) FRC902CDG	SFP000260	SDB000330	SFP000280	FRC3502	ICW500010
1A to 2006 All	FRC7329(Solid) FRC7329CDG FTC902(Vented) FRC902CDG	SFP000260	SDB000330	SFP000250	FRC3502	ICW500010
2007 On All	FRC7329(Solid) FRC7329CDG FTC902(Vented) FRC902CDG	SFP000260	SDB000330	SFP000250	SDC100200	ICW500010

CDG = Cross Drilled and Grooved





Discovery -1989 to 1998

Vehicle Details	Front Discs	Front Pads	Rear Discs	Rear Pads	Parking Drum	Parking Shoes
1989 - KA034313	FRC7329(Solid) FRC7329CDG	SFP500220	FTC1381 FTC1381CDG	SFP500200(With Sensors) SFP500190 (No Sensors)	FRC3502	STC965
KA034313 ON	FRC7329(Solid) FRC7329CDG	SFP500160	FTC1381 FTC1381CDG	SFP500200(With Sensors) SFP500190 (No Sensors)	FRC3503	ICW500010
All Vented	FTC902 FTC902CDG	SFP500180	FTC1381 FTC1381CDG	SFP500200(With Sensors) SFP500190 (No Sensors)	FRC3502	STC965(Rod) STC1525(Cable)



Discovery II - 1998 to 2004

Vehicle Details	Front Discs	Front Pads	Rear Discs	Rear Pads	Parking Drum	Parking Shoes
All Years	SDB000380 SDB000380CDG	SFP500150	SDB000470 SDB000470CDG	SFP500130	FRC3502(V8) SDC100200(TD5)	ICW500010

CDG = Cross Drilled and Grooved



Discovery III - 2005 on

Vehicle Details	Front Discs	Front Pads	Rear Discs	Rear Pads	Parking Drum	Parking Shoes
4.0 V6 EFI	SDB000604 SDB000604CDG SDB000614CDG	SFP500010	SDB000636 SDB000636CDG SDB000646CDG	LR016808	N/A	SFS500012
2.7 V6 Diesel	SDB000604 SDB000604CDG	SFP500010	SDB000636 SDB000636CDG	LR016808	N/A	SFS500012
4.4 Petrol	SDB000614CDG		SDB000646CDG			

CDG = Cross Drilled and Grooved





Freelander 1 - 1996 to 2006

Vehicle Details	Front Discs	Front Pads	Rear Drums	Rear Shoes
Up to YA999999	SDB100830	SFP100360	SDC100130	SFS000061
From 1A000001	SDB101070 SDB101070CDG	SFP500100	SDC000010	SFS000030

CDG = Cross Drilled and Grooved

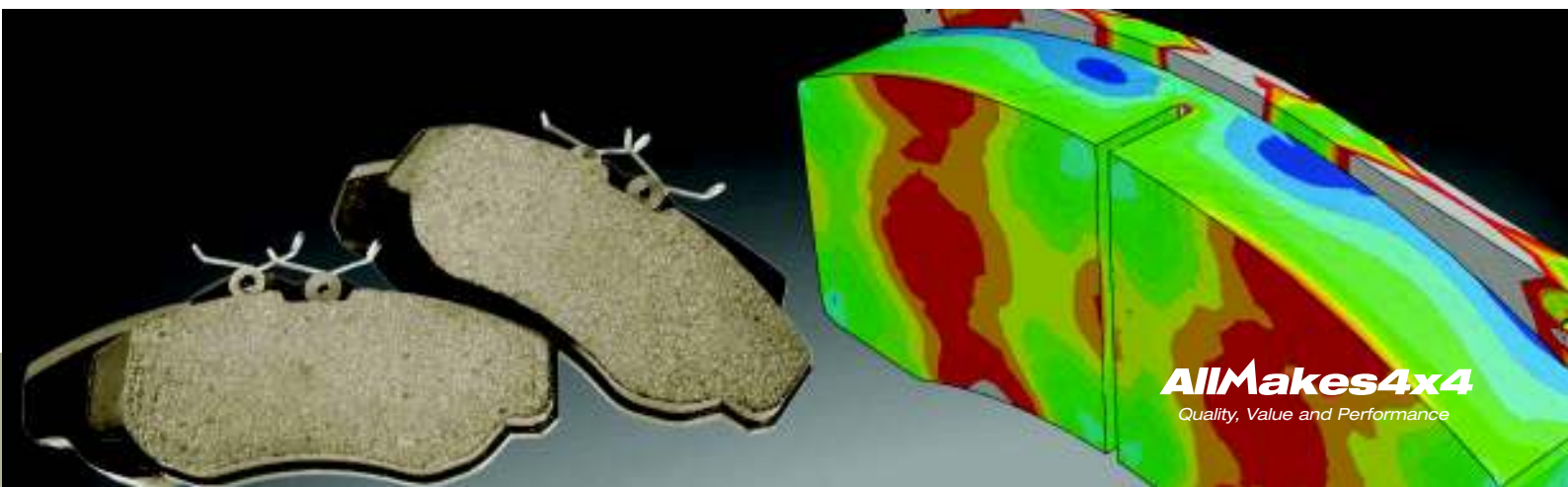




Freelander 2 - 2006 on

Vehicle Details	Front Discs	Front Pads	Rear Discs	Rear Pads	Parking Shoes
3.2 Petrol	LR000470	LR004936	LR001019	LR003655	LR001020
2.2 Diesel	LR007055	LR004936	LR001018	LR003657	LR001020

CDG = Cross Drilled and Grooved





Range Rover Classic - 1972 to 1995

Vehicle Details	Front Discs	Front Pads	Rear Discs	Rear Pads	Parking Drum	Parking Shoes
Manual (1972-1985)	571752	STC9186	571912	SFP500190	90576624	STC2880
Auto 5 SPD (1972-1985)	571752	STC9186	571912	SFP500190	FRC3502	STC965
1986 - FA399972 (88/9)	FRC7329 FRC7329CDG	STC9187	FTC1381 FTC1381CDG	SFP500200	FRC3502	RTC6179
GA399973 to 1991	FTC902 FTC902CDG	SFP500180	FTC1381 FTC1381CDG	SFP500200	FRC3502	
1992 -1995	FTC902 FTC902CDG	SFP500180	FTC1381 FTC1381CDG	SFP500200	FRC3502	ICW500010 STC965(Rod)



Range Rover P38 - 1995 to 2002

Vehicle Details	Front Discs	Front Pads	Rear Discs	Rear Pads	Parking Drum	Parking Shoes
1995-2002	NTC8780 NTC8780CDG	SFP500150	SDB000470	SFP500130	SDC100200	ICW500010

CDG = Cross Drilled and Grooved



Range Rover L322 - 2002 on

Vehicle Details	Front Discs	Front Pads	Rear Discs	Rear Pads	Parking Drum	Parking Shoes
Less Armoured to 5A	SDB000201 SDB000201CDG	SFC500080	SDB000211	SFP500210	N/A	SFS000051
3.0D & 4.4 V8 - 5A on	SDB500182	SFP500010	SDB500202	LR016808	N/A	SFS000051
3.6D & 4.2 V8 - 5A to 8A	SDB500193	SFP500070	SDB500202	LR016808	N/A	SFS000051
3.6D & 4.2 V8 - 8A on	SDB500193	SFP500240	SDB500202	LR016808	N/A	SFS000051

CDG = Cross Drilled and Grooved





CDG = Cross Drilled and Grooved

Range Rover Sport - 2005 on

Vehicle Details	Front Discs	Front Pads	Rear Discs	Rear Pads	Parking Drum	Parking Shoes
2.7 V6 Diesel	SDB000604 SDB000604CDG	SFP500010	SDB000636 SDB000636CDG	LR016808	N/A	SFS500012
3.6 V8 Diesel	SDB000624	SFP500070	SDB000624	LR016808	N/A	SFS500012
4.2 V8 Supercharged	SDB000624	SFP500070	SDB000646 SDB000646CDG	LR016808	N/A	SFS500012
4.4 V8 EFI	SDB000614 SDB000614CDG	SFP500010	SDB000646 SDB000646CDG	LR016808	N/A	SFS500012





Allmakes 4x4
39, Milton Park
Abingdon
Oxfordshire
OX14 4RT
United Kingdom

Order: +44 (0) 1235 821122
Fax: +44 (0) 1235 854444
email: sales@allmakes.co.uk
web: www.allmakes4x4.com

Quality Brakes Application Brands Distributed by

AllMakes4x4
Quality, Value and Performance